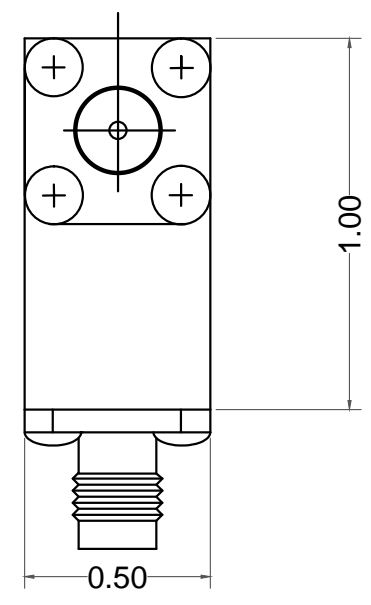


2-56 X 0.15 DP 3 Places (Tapped Holes, Both Sides)

SMA FEMALE
3 Places



ELECTRICAL SPECIFICATIONS

FREQUENCY RANGE (GHz):	1.700 - 2.000
ISOLATION (dB):	23 TYP 20 MIN
INSERTION LOSS (dB):	0.30 TYP 0.40 MAX
VSWR:	1.15 TYP 1.25 MAX
POWER: AVG (ALL PORTS):	150W
PEAK:	750W

MECHANICAL SPECIFICATIONS

CONNECTORS:	SMA-FEMALE, STAINLESS STEEL, PASSIVATE
CONTACT PINS:	BERYLLIUM COPPER, GOLD PLATE
OPERATING TEMPERATURE:	-20° to +65°C
WEIGHT (APPROX):	2.00 OUNCES

DIMENSIONS IN INCHES, UNLESS OTHERWISE SPECIFIED		Dilom MICROWAVE INC. <small>Fresno, California, USA</small>	
TOLERANCE XX±0.03 XXX±0.010	TITLE 1.7 - 2.0 SMA Circulator		
SCALE 4:1	MODEL NO D3C0120	REV	